

530 Swirl Fine
531 Swirl Coarse
532 Multi-texture
533 Sand Smooth

534 Sand Fine
535 Sand Coarse
536 Sand Stone

DPR Acrylic Finishes



530 SWIRL FINE



534 SAND FINE



531 SWIRL COARSE



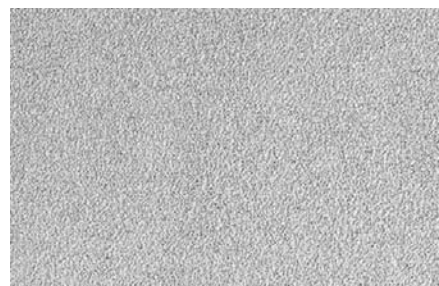
535 SAND COARSE



532 MULTI TEXTURE



536 SAND STONE



533 SAND SMOOTH

DESCRIPTION:

- 100 percent acrylic-based textured finish
- Dirt Pick-up Resistance (DPR): The surface of the finish hardens and does not soften again under heat. The non-tacky surface provides high resistance to accumulation of dirt, mold, and pollutants
- Integrally colored with high-quality pigments
- Exceeds EIMA recommendations

USES:

Exterior or interior finish coat over:

- Parex Exterior Insulation and Finish Systems
- Properly prepared masonry, stucco, and concrete surfaces
- Interior application over drywall, plaster, or properly prepared masonry or concrete

COMPOSITION:

- Binder base: 100 percent acrylic polymer with surface-hardening property
- Aggregate: Pure crushed marble, rust-free
- Water-based: VOC-compliant
- Pigment base: Titanium dioxide
- Color: Parex standard colors or tinted to desired custom color

Note:

"The Plus" Advantage can be added to any Parex finish or coating. "The Plus" provides additional protection against mildew and algae growth.

Finishes can be silicone-enhanced to improve the product performance against dirt pick-up and pollution.

PAREX®

530 Swirl Fine
531 Swirl Coarse
532 Multi-texture
533 Sand Smooth

534 Sand Fine
535 Sand Coarse
536 Sand Stone

DPR Acrylic Finishes

COVERAGE:

Depending on the condition of the substrate and method of application, approximate coverages are:

530 Parex Swirl Fine

Aggregate size: 1.5mm
120–135 sq. ft. (11–12.5m²) per pail

531 Parex Swirl Coarse

Aggregate size: 3.0mm
70–95 sq. ft. (6.5–9m²) per pail

532 Parex Multi-Texture

60–150 sq. ft. (6–14m²) per pail
Coverage varies due to texture.

533 Parex Sand Smooth

Aggregate size: 0.5mm
280–300 sq. ft. (26–28m²) per pail

534 Parex Sand Fine

Aggregate size: 1.0mm
150–165 sq. ft. (14–15m²) per pail

535 Parex Sand Coarse

Aggregate size: 1.5mm
110–125 sq. ft. (10–11.5m²) per pail

536 Parex Sand Stone

Aggregate size: 0.75mm
140–165 sq. ft. (14–15m²) per pail

CONTAINER:

65 lb (29.5 kg) net weight in plastic pails.

- Storage: Protect from sun and freezing at all times
 - Do not stack pails more than 3 pails high
- Shelf life: One year if protected from sun and freezing

DRYING TIME:

24 hours under normal conditions. High humidity and low temperatures extend drying time.

CLEANUP:

Water-soluble prior to drying. Clean tools and containers with water prior to drying.

SURFACE PREPARATION:

- Remove surface contaminants such as dust or dirt without damaging the substrate.
- For previously painted surfaces, all loose and chalking paint must be removed, and glossy surfaces dulled.
- New concrete and masonry must be clean and cured a minimum of 28 days.
- Check concrete surfaces for alkalinity and treat. Any form-release agents or bond breakers must be removed.
- Uneven concrete or masonry can be leveled with 121, 121 Dry or 121 XL Base Coat & Adhesive or other suitable, compatible product.
- For interior drywall, prepare as for painting.
- Prime with Parex 310 Primer or 313 Sanded Primer.
- For application of Parex 310 Primer or 313 Sanded Primer, refer to the Product Data Sheet.
- For additional options, contact Parex Technical Services Department.

MIXING:

- Use clean equipment for mixing and preparation.
- Stir to obtain a homogeneous consistency using a heavy-duty 1/2-in. (13mm) drill with a rust free paddle at 400–500 rpm. Avoid air entrainment.
- Add the amount of water needed to achieve finish texture. To avoid color variations, add the same amount of water to each pail of finish as indicated on product pail.

APPLICATION:

- Read the entire label before using this product
- Always maintain a wet edge and work to corners or joints. For best color consistency, use finish with the same batch number within a wall section.
- Keep container closed when not in use.
- Use a clean stainless steel trowel and apply a uniform coat the thickness of the largest aggregate size of the finish. For Parex 532 Multi-Texture Finish, apply a coat slightly thicker than the largest aggregate size.

- Texturing 532 Multi-Texture Finish: Follow the first application with a second application of 532 Multi-Texture Finish, using tools and techniques necessary to obtain the desired texture. The maximum thickness within the applied texture must not exceed 3/16 in. (5mm) with average thickness not more than 1/8 in. (3mm).
- Texturing 530 Swirl, 531 Swirl Coarse, 534 Sand Fine, and 535 Sand Coarse Finishes: Use a clean plastic float or stainless steel trowel. A plastic float will roll the large aggregates more than a stainless steel trowel. Continuously dry clean the plastic float or steel trowel while texturing. Use consistent pressure and motion to achieve the desired texture. See Parex application guides.
- Texturing 533 Sand Smooth Finish:
 - Optional: Level stucco brown coats with Parex 121, 121 Dry, or 121 XL Base Coat & Adhesive and let dry prior to finish application.
 - 533 Sand Smooth Finish cannot generally be floated. Texture will be "as trowelled."
 - 533 Sand Smooth Finish can be trowelled smooth to simulate the texture of limestone.
 - For smoothest application, apply in two tight coats. Allow first coat to dry enough that it will not be disturbed during application of the second coat. When second coat is partially dry, trowel to desired smoothness. Light, consistent misting with water during smoothing will increase smoothness. Variations in color tint and smoothness should be expected.
- Spray application: To achieve consistent texture, spray application must use consistent motion, pressure, distance and spray angle. A job-site mock up for spray application is advised.

LIMITATIONS:

- Ambient and surface temperature must be 40°F (4°C) or higher during application and drying time. Supplemental heat and protection from precipitation must be provided as needed.
- Use only on surfaces that are sound, clean, dry, unpainted, and free from any residue that might affect the ability of the finish to bond to the surface.
- Avoid application in direct sunlight in hot weather.

PAREX®

Corporate Office
ParexLahabra, Inc.
4125 E. La Palma Avenue, Suite 250
Anaheim, CA 92807
(714) 778-2266
(866) 516-0061, Tech Line

Sales Office
Parex
1870 Stone Mountain-Lithonia Road
Redan, GA 30074
(800) 537-2739

Plants
Redan, GA
Riverside, CA
French Camp, CA
Colorado Springs, CO
Albuquerque, NM
San Antonio, TX
Wilkes Barre, PA

